



ATFX Support & Resistance Indicator

User Manual

The ATFX MT5 Support & Resistance (S&R) Indicator is a proprietary, advanced trading tool designed to dynamically identify key support and resistance levels on your MT5 charts. It enhances market structure visibility, highlights actionable trade setups, and provides clear risk-based trade guidance.

This manual combines the complete trading strategy guidance and the technical installation/operation instructions.

Before You Begin:

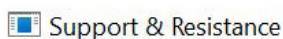
- Ensure you have the ATFX MT5 Terminal installed on your device.
If you need a specific ATFX MT5 Terminal for your account (eg. regional builds like ATFXGM or ATFXKH), please contact ATFX Customer Service or your Account Manager before proceeding.
- Demo accounts have access to the indicator for 30 days only.
- Live accounts require a minimum balance of USD 300 to continue using the indicator after the trial period.
- Close your MT5 platform before running the indicator installer.

Step 1 - Downloading the S&R setup file

- Download the file [Support & Resistance.exe](#) using Google Chrome for best results. Save it to an easy-to-find location on your device, such as your Desktop or Downloads folder.

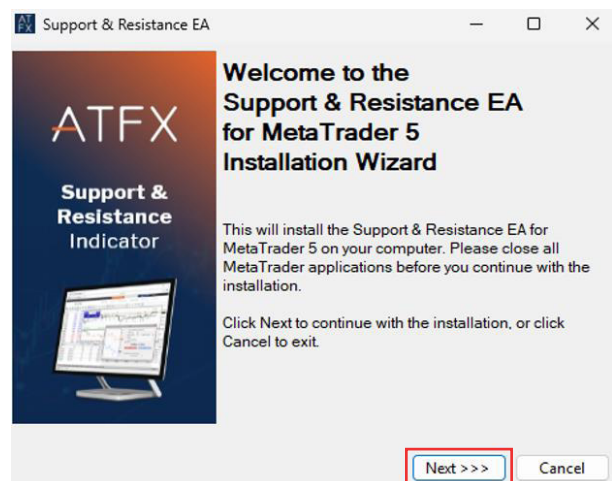
Step 2 - Installing the Indicator

- Once the setup file has been downloaded, locate the downloaded .exe file.

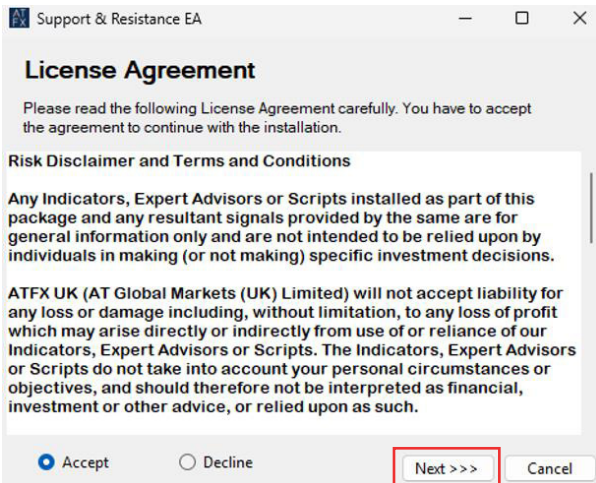


- Double-click to launch the installer.

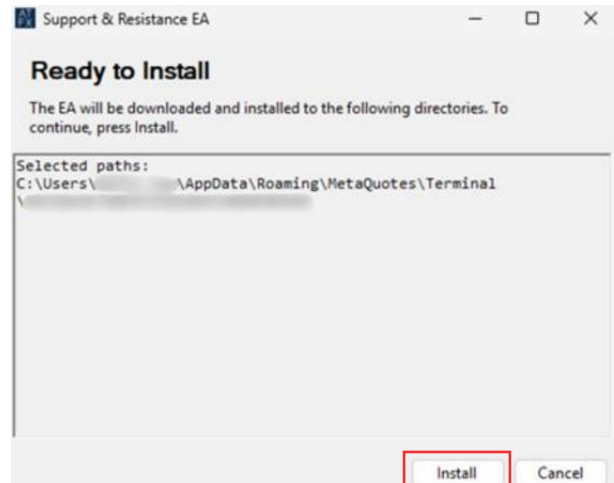
- Follow the prompts by clicking **Next > Next** on the pop-up window.



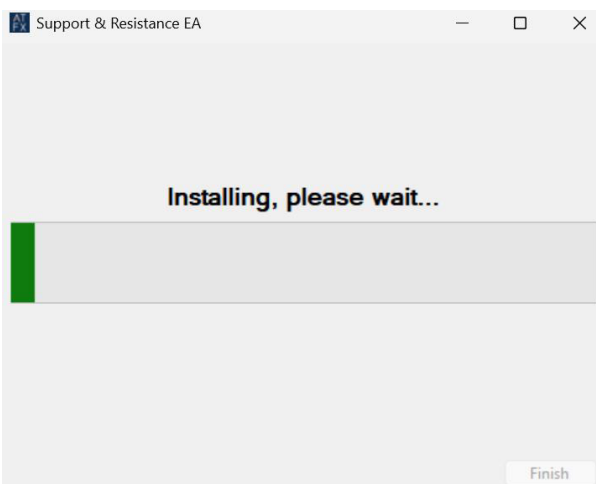
Accept the License Agreement when prompted, then click **Next**.



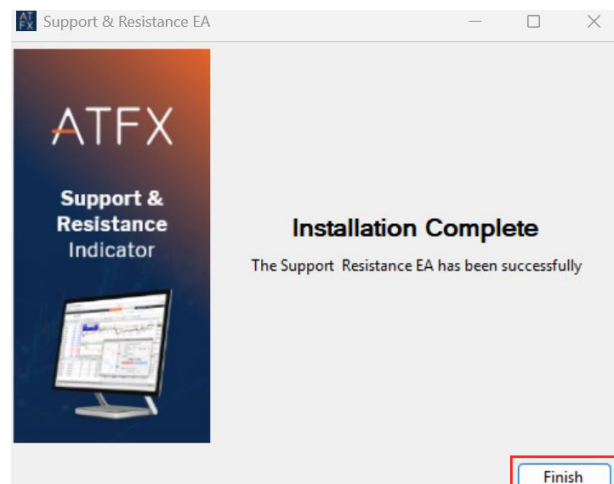
Click **Install** and wait for the installation to complete.



The S&R indicator will start the installation process.



Click **Finish** to exit the installer.



If the installer fails:

- Find the installer file you downloaded, right-click it, and select **"Run as administrator."**
- Temporarily turn off your antivirus software if you know how and feel it's safe.
- Make sure the installer file downloaded completely and isn't incomplete.

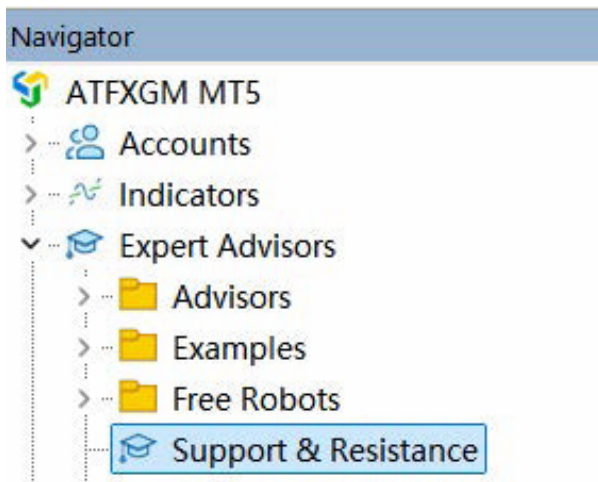
Step 3 - Launching MT5 and Enabling the Indicator

Open the ATFX MT5 Terminal from your desktop.

If you need a specific ATFX MT5 Terminal for your account (eg. regional builds like ATFXGM or ATFXKH), please contact ATFX Customer Service or your Account Manager before proceeding.

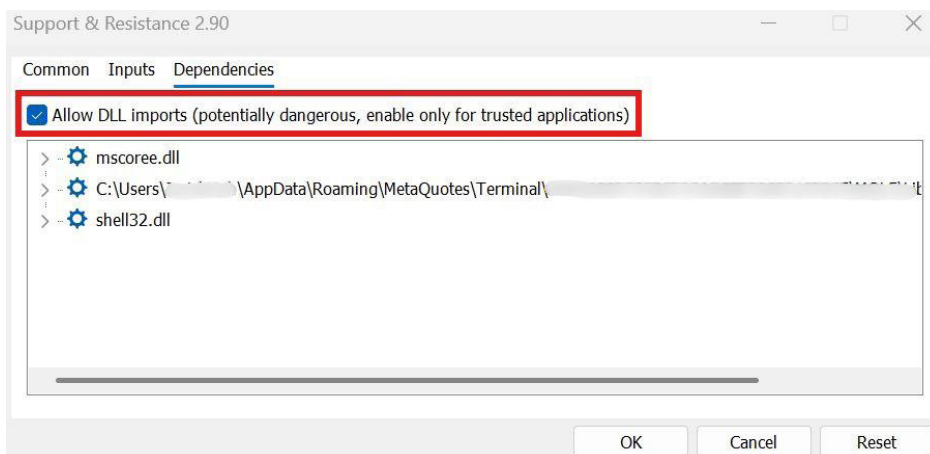


On your ATFXGM MT5 Terminal, open the **Navigator** window by pressing via **View -> Navigator**. Then, under **Expert Advisors (EA)**, find the indicator labelled **Support & Resistance** and double click on the file to open it.

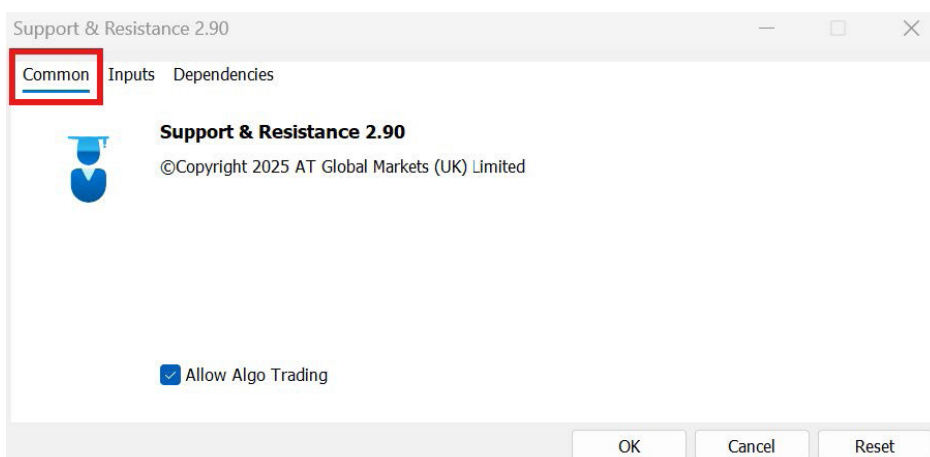


Step 4 - Activating the Indicator (Enable DLL & Algo Trading)

Once the **Support & Resistance** file is opened, first enable **Allow DLL imports** to permit the indicator to access necessary external libraries.



Then, go to the **Common** tab and enable **Algo Trading** to allow automated trading functions before proceeding, to activate the indicator.



The indicator will now be installed and fully operational on your chart.



Inputs / Configuration Settings (Optional)

In the Inputs tab, customize the indicator's appearance and settings, including language, font, alerts, colours, and risk percentage. The risk percentage sets how much of your account you're willing to risk per trade.

Support & Resistance 2.90

Common **Inputs** Dependencies

Variable	Value
Language	English
Make Font Smaller	false
Font Size	10
Show Alerts	true
Analysis Text Color	<input type="checkbox"/> White
Bullish Text/Level Color	<input checked="" type="checkbox"/> Lime
Bearish Text/Level Color	<input checked="" type="checkbox"/> Red
Stop Level Text/Level Color	<input checked="" type="checkbox"/> Red
Take Profit Text/Level Color	<input checked="" type="checkbox"/> Lime
Risk Percentage	1.0
Risk Text Color	<input type="checkbox"/> White

Load Save Cancel Reset

- **Language:** Choose your preferred display language.
- **Font:** Adjust the size and style of the on-chart text.
- **Alerts:** Enable or disable alert notifications.
- **Colour:** Customize the colours used for support/resistance lines and display elements.
- **Risk Percentage:** Set the percentage of your account risk used for entry and stop-loss calculation.

Note:

For example, with a 1% risk setting on a \$1,000 account, the tool will calculate appropriate entry and stop-loss levels reflecting a \$10 risk amount.

Lot Size @ 1.00% Risk = 0.01
If buying at 0.6547 with a stop at 0.652

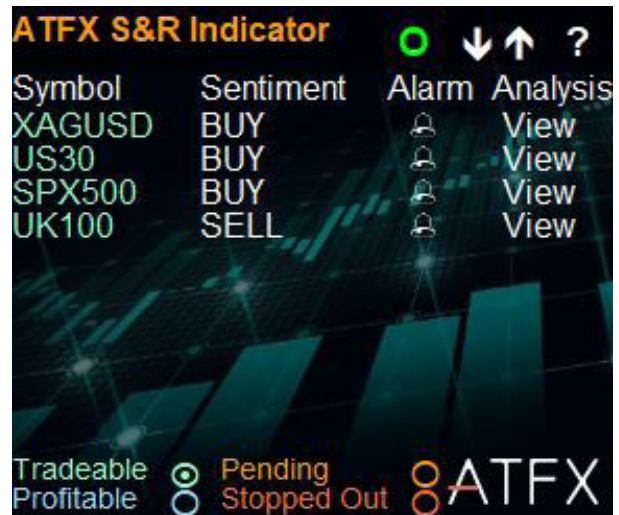
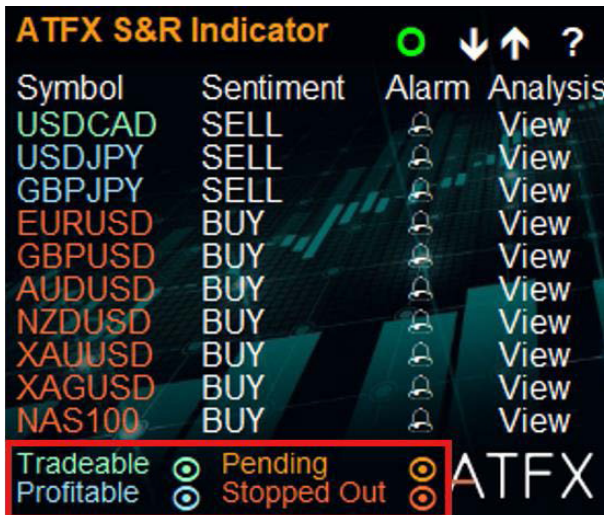
Using the Indicator Interface

The S&R indicator control panel will appear in the **bottom left corner** of the chart.



Use the **eye icons** to toggle visibility of:

- Tradeable instruments
- Profitable instruments
- Pending trades
- Stopped-out trades
- Click **View** next to an instrument to see detailed information.



- The chart also displays **Buy and Sell sentiment markers** which you can toggle on/off anytime.

Buy sentiment indicator



Sell sentiment indicator



● **Interface icons explained:**

Iron's circle indicator: Green = indicator active; White = indicator off.



Scrolling arrows: Use these to scroll through and select different instruments.



Tutorial icon: Click to open the tutorial interface and select your preferred language for the user guide.

How to Customize the Support & Resistance Lines (Optional)

If you want to customize the appearance or details of the Support & Resistance lines, such as renaming lines, adding descriptions, or changing colours, you can do so easily. This is an optional step for users who prefer a personalized chart view.

Hover your mouse over a **Bearish (above price)** or **Bullish (below price)** level. These objects appear as FXSig_Sell or FXSig_Buy.



Double-click the line to select it (ensure "End-of-line" mode is active).



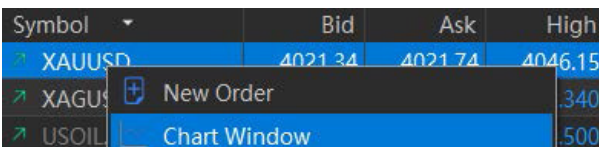
Right-click and select **Properties**.



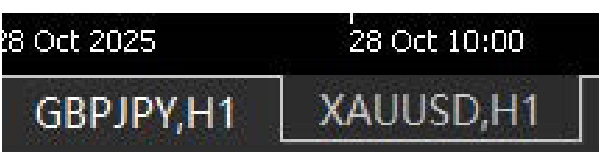
Apply changes and close the dialog.

Working With Multiple Charts

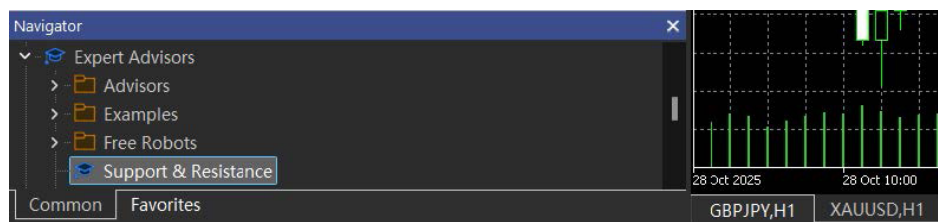
To open a new chart, right-click the desired instrument in Market Watch and select Chart Window.



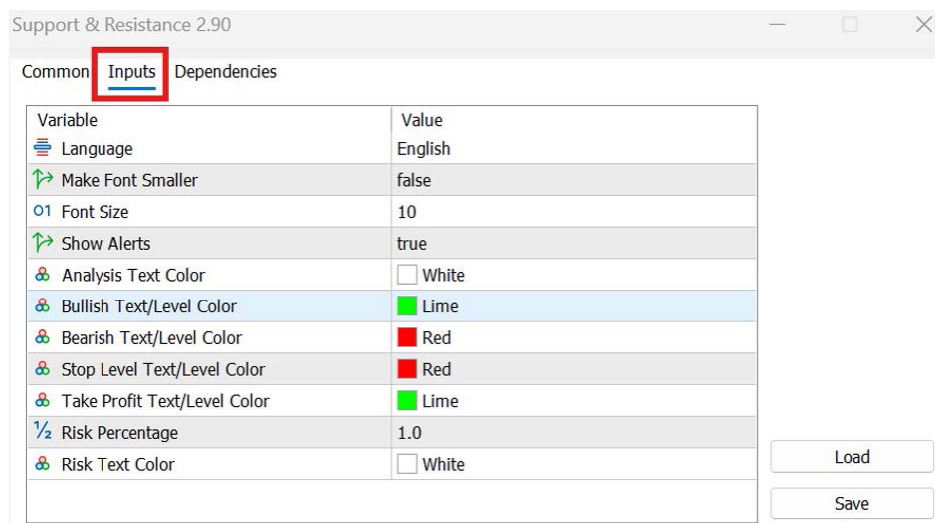
A new window will be activated below the chart. (e.g. XAUUSD here)



Drag or double-click the **Support & Resistance EA** from Navigator to the new chart (e.g. XAUUSD here)



You can adjust and modify any configuration under Inputs as needed as mentioned in **Step 5** and confirm.



Each chart runs the indicator independently.

Troubleshooting & Tips

- **Indicator missing in Navigator:** Restart MT5, confirm installation in the correct MT5 build (eg. ATFXGM or ATFXKH).
- **EA not trading or displaying levels:** Confirm Algo Trading is enabled in MT5 settings and EA properties.
- **Cluttered display:** Adjust font size, colours, and toggle instrument groups using eye icons.

Frequently Asked Questions (FAQ)

- Q: Can I use this on any MT5?**
A: No. Use the ATFX MT5 Terminal. If you have a different build, check with ATFX support.
- Q: Can I change the indicator language?**
A: Yes. Language selection is available in Inputs and the tutorial menu.
- Q: How long is the demo access?**
A: 30 days for demo accounts. Live accounts must maintain at least USD 300 balance to continue use.

Quick Installation Checklist

- Download installer using Chrome -> Save to easy folder
- Run installer -> Next -> Accept Terms -> Install -> Finish
- Enable Algo Trading in Common tab -> Set Inputs -> Confirm
- Close MT5 platform
- Launch AFX MT5 -> Open Navigator -> Attach Support & Resistance to chart

Support & Contact

If you experience any issues with the MT5 Terminal, the Support & Resistance indicator, or have questions about your account, please reach out to AFX Customer Service or contact your Account Manager.